

Cool Machines Inc.

Fiber Machines - Cutting Edge Cool

www.coolmachines.com



CM-2400 Machine System

The **CM-2400** series machine provides an **economical, high production** machine with **low power requirements** and reduced weight/size in your truck/trailer system.

The **simple design** and minimal moving parts provide a machine that is **low maintenance** and easy to repair.

This compact, **robust** machine with its various options, will out-perform and out-last any machine in its class.



Production Rate:

40.6 cm Airlock 30.5 cm Airlock

| <u>Material</u> | <u>Production Rate</u> |
|-----------------|------------------------|
| Cellulose | 1361 kg/hr. |
| Fiberglass | 454 kg/hr. |
| Rockwool | 817 kg/hr. |
| <u>Material</u> | <u>Production Rate</u> |
| Cellulose | 1633 kg/hr. |
| Fiberglass | 635 kg/hr. |

Optimal Performance with 'ALL' Fibers

CM-2400S 'Standard'



Shown with Optional Hopper Extension

Specifications:

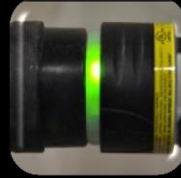
- **Weight:** 327 kg (Double Blower)
- **Dimensions:** 158 cm l x 59 cm w x 183 cm h
- **Hopper Capacity:** 0.42 m³ (0.74 m³ w/ Hopper Extension)
- **Airlock size:**
 - 30.5 cm dia. x 30.5 cm long, 0.28 bar w/ 7.6 cm output tube.
 - 30.5 cm dia. x 40.6 cm long, 0.28 bar w/ 7.6 cm output tube.
- **Drive motor:** 1 1/2 h.p. or 2 h.p.
- **Blower:**
 - 7 amp. /4 m³/min. (Blower Box)
 - 5 h.p. - P.D. Blower/ 6.1 m³/min.
- **Power Requirements:**
 - 10/10 amp., 230 volt double input (Double Blower)
 - 10/10/10 amp., 230 volt triple input (4-Blower)
 - 10 amp., 380 volt 3-phase single input (PD Blower)

Features & Benefits



Slow speed 'scalping' augers extend component life and enhance safety.

High speed turbo-shredder maximizes conditioning, coverage, and production.



L.E.D. lighed plugs and receptacles for quick electrical diagnostics.

Gearbox/Motor for low cost replacement.



Machine Options

- 12.7 cm dia. caster wheel package
- Full Hopper Extension (pictured)
- Wireless Remote System
- CE conformity f/export
- Blower Box (4 Blowers)
- PD Blower
- Recycle 'Vac-Hood' System (CM-2400VH)

Blower Comparison



Blower Box (Containing 2 or 4 Centrifugal Blowers)

This option offers an economical choice that will meet most contractors' needs. The service life of the blower is approx. 1200 to 1500 hrs., and can be replaced for a few hundred dollars each.

5 h.p. Positive Displacement (P.D.) Blower

Excellent performance for long range delivery up to 60 m. Includes all of the features and benefits of the large hopper capacities with adequate air for blowing at a lower 'price' with lower 'power' requirements.



Questions? Call us at 419-232-4871

CM-2400VH 'Vac Hood'

Shown with Optional Hopper Extension



Features & Benefits



Innovative Vacuum Hood provides a multi-function machine system.

An added Recycle SlideGate gives the operator precise metering of recycle fiber.



Dual Agitators keeps recycle fiber from bridging and blocking filter screen.



Removable Internal SlideGate Hopper Divider.



Specifications:

- **Weight:** 476 kg
- **Dimensions:** 173 cm l x 59 cm w x 186 cm h
- **Hopper Capacity:**
 - Dry: 0.32 m³ (0.48 m³ w/ Hopper Extension)
 - Recycle: 0.2 m³
 - Total: 0.68 m³
- **Airlock size:** 30.5 cm dia. x 40.6 cm long, 0.28 bar w/ 7.6 cm output tube.
- **Drive motor:** 1 1/2 h.p. or 2 h.p.
- **Blower:**
 - 7 amp. /4 m³/min. (Blower Box)
 - 5 h.p. - P.D. Blower/ 6.1 m³/min.
- **Power Requirements:**
 - 10/10 amp., 230 volt double input (Double Blower)
 - 10/10/10 amp., 230 volt triple input (4-Blower)
 - 10 amp., 380 volt 3-phase single input (PD Blower)

Machine Options

- 12.7 cm dia. caster wheel package
- Hopper Extension for Divided Hopper (pictured)
- Wireless Remote System
- CE conformity f/export
- Blower Box (4 Blowers)
- PD Blower

Why use Vac-Hood Technology?

Economical with low power requirements. (16 h.p Gas vacuum or larger recommended) Added Gas Vacuum offers a 'dual' purpose machine used for wall cavity recycle or can be deployed to a separate job location for attic insulation removal, while CM-2400 completes other jobs.



Optimal Performance with 'ALL' Fibers

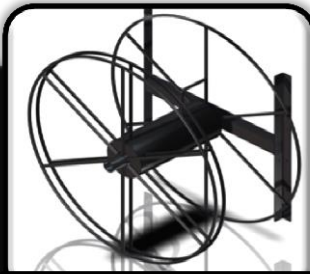
Truck/Trailer Systems

Truck/Trailer

- Available as 'Turn Key' Systems out-the-door or as Retro-fit systems for your truck or trailer
- On-board Water Tank and Hose Reel options
- Portable generators and PTO systems mounted for efficient cooling and safe exhaust
- Cool Machine Air Intake w/ Filter attached thru floor
- Designed for quick set-up and efficient use



Machine Accessories



Hose Reels



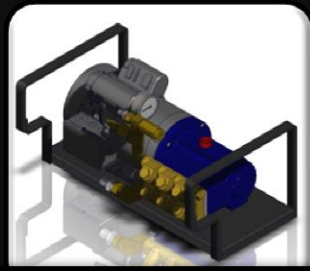
Hoses & Fittings



Water Tanks



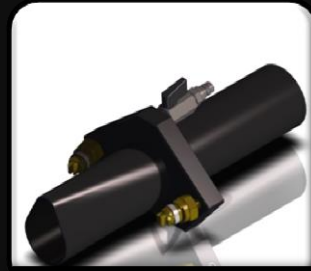
Generators



Water Pumps



Wall Scrubbers



Spray Equipment



Vacuum Wands

Cutting Edge Cool!

Questions? Call us at 419-232-4871